

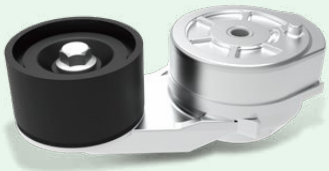


RAYSOW POWER TRANSMISSION

睿硕传动系统

RAYSOW POWER TRANSMISSION

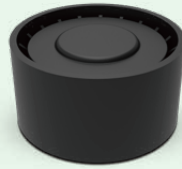
睿硕传动系统



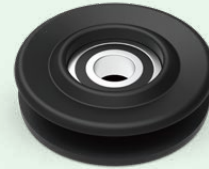
附件张紧器
Accessory Tensioner



正时张紧轮
Timing tensioner



惰轮
Idler Pulley



单向轮
One-way Pulley



同步带轮
Timing Belt Pulley



Using imported damping materials.
The product has low noise and long life.

使用进口阻尼材料，
产品噪音低寿命长。



Sealed bearings with high-speed rotation and
temperature resistance up to 150°C, enabling
the product to maintain constant tension.

耐温150°C高转速密封轴承，
适合各种复杂环境



Anti-fatigue springs and ultra-high-strength
bolts ensure the product maintains constant
tension, resulting in smoother and more
economical vehicle power output.

抗疲劳弹簧，超高强度螺栓，
保证产品具有恒定张紧力，
使车辆动力输出更平顺，更经济